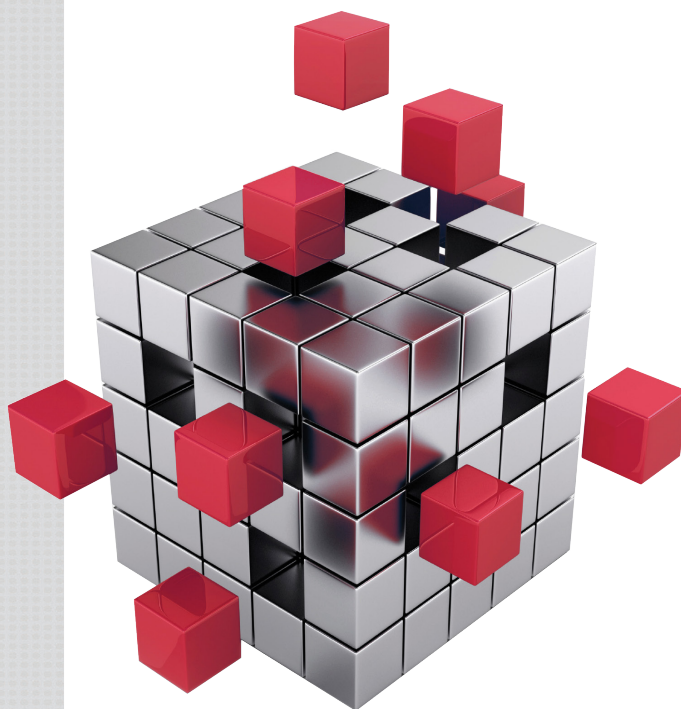




[www.savanna.NET](http://www.savanna.NET)



3655 Sandhurst Drive, York PA, 17406  
Phone: (717) 764-1115 Fax: (717) 764-1118  
Toll Free: (800) 673-2522  
Email: [Sales@Savanna.NET](mailto:Sales@Savanna.NET)

## ADMINISTRATIVE LEVEL

Host  
ERP system



## MANAGEMENT LEVEL

Savanna.NET® Warehouse Management System  
Controls the movement, storage and retrieval of materials



## CONTROL LEVEL

Savanna.NET® Warehouse Control System  
Controls the real-time activities of automated material  
handling equipment



## MACHINE CONTROL LEVEL

PLC



## I/O DEVICE LEVEL

Sensors  
Actuators  
Conveyors  
S/RM's



## 3<sup>RD</sup> PARTY EQUIPMENT

RF Terminals  
Scanners  
Printers  
Fork Lift Trucks

WESTFALIA TECHNOLOGIES, INC.



# SAVANNA.NET® WAREHOUSE EXECUTION SYSTEM

## Conforms to your business and runs your entire facility

Westfalia's Savanna.NET® Warehouse Execution System (WES) is a unique warehousing solution comprised of tightly integrated Warehouse Management System (WMS) and Warehouse Control System (WCS) software that conforms to your business processes.

With its flexible modular structure supporting both conventional and automated warehouses, Savanna.NET® is configured to meet each client's business processes.

Based on Microsoft C# and .NET technologies, Savanna.NET® directs, controls and optimizes internal material flow and order picking as a system-wide software solution. Savanna.NET® offers a broad spectrum of interfaces to various ERP systems, web interfaces and PLC systems.

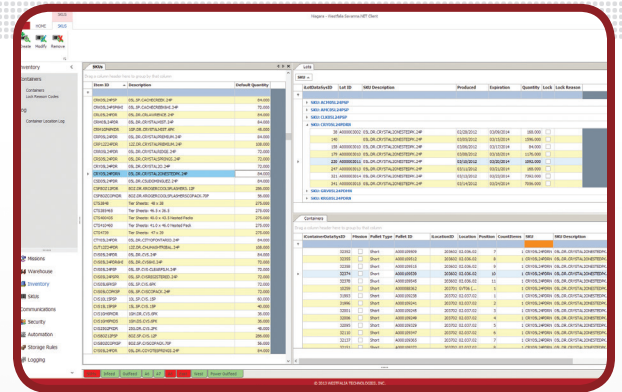
The Savanna.NET® solution optimizes, manages and controls your storage facility, saving time and money, while also providing the flexibility to select the functions needed to meet your specific business needs.

Cost savings and better customer service accrue from the efficiencies of Savanna.NET® including:

- **More efficient use of warehouse space and equipment**
- **Increased order accuracy resulting in improved customer service**
- **Reduced losses from stolen, damaged or misrouted products**
- **Increased labor productivity and throughput**
- **Lower costs per unit shipped**

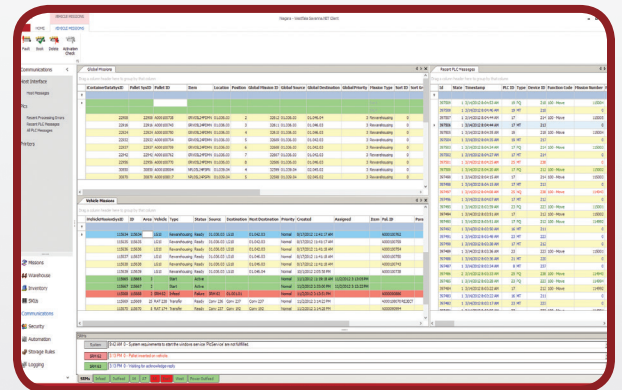
Westfalia has been specializing in logistical solutions for more than 35 years and uses the most up-to-date standards for software development. Our experience designing and installing Savanna.NET® throughout the world covers multiple industries including:

- **Beverage**
- **Food**
- **Dairy**
- **Print**
- **Chemicals**
- **Freezer applications**

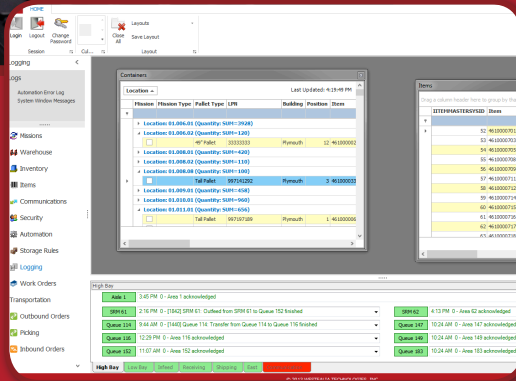


Above: Inventory management interface showing SKU's, lots and containers

Below: Savanna.NET® Warehouse Control System interface to automation







Savanna.NET® WES is a unique WMS-WCS integrated system eliminating the need for a WMS-WCS interface. This two-in-one method utilizes one single system to perform the tasks of both a WMS and a WCS. Furthermore, the Savanna.NET® technology simplifies communication and controls and exchanges are not complicated by duplicated data or controls.

Having been born from automation, Savanna.NET® provides the management features of a WMS, along with the automation control components of a WCS.

With its modular capability, Savanna.NET® enables companies of all sizes to select only the modules they need to handle their warehousing processes. Savanna.NET® is comprised of base modules / functionality, and enhanced by client-driven customizations.

## Inbound Functionality

- ◆ User ASN processing
- ◆ Order receiving
- ◆ Returns processing
- ◆ Directed and rules-based put away
- ◆ Quality assurance
- ◆ Multiple receipt options

## Inventory Functionality

- ◆ Inventory visibility
- ◆ Cycle counting
- ◆ Space allocations
- ◆ Tracking item attributes
- ◆ Comprehensive lot, container and SKU tracking
- ◆ Item zoning
- ◆ Replenishment
- ◆ Pallet management
- ◆ Work order processing
- ◆ Load management

## Resource Management

- ◆ Pick location and slotting for manual picking
- ◆ Automation interfaces
- ◆ Directed picking
- ◆ Material handling equipment utilization
- ◆ Warehouse transfers





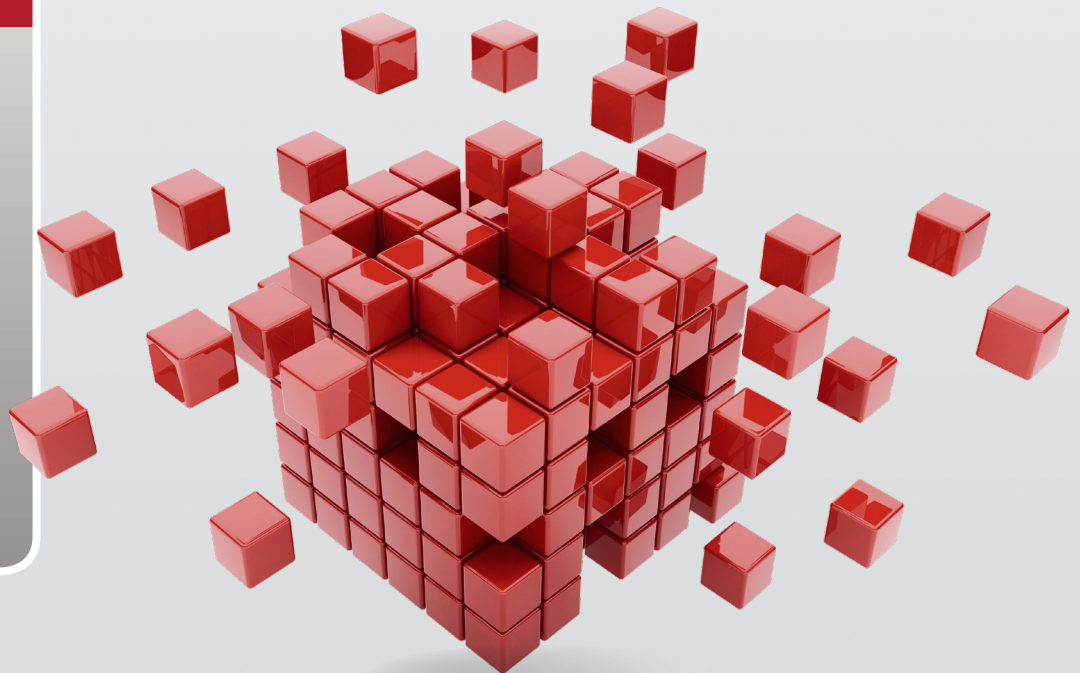
Customizations can be easily added to the module or further enhanced as requested. In addition, Savanna.NET's architecture allows for seamless upgrades.

Savanna.NET® allows existing facilities to be maintained, modernized or expanded. For companies considering automating their warehouses in the future, Westfalia's key advantage is knowing how to implement and service automation, in steps or all at once.

**Easy-to-use, tab style  
interface provides  
real-time information**

## Outbound Functionality

- ◆ Order fulfillment
- ◆ Order management
- ◆ Order staging
- ◆ Multi-method order picking
- ◆ Shipping
- ◆ Trailer management



# YOUR WINDOW TO AUTOMATION

*Software to run your automated facility*

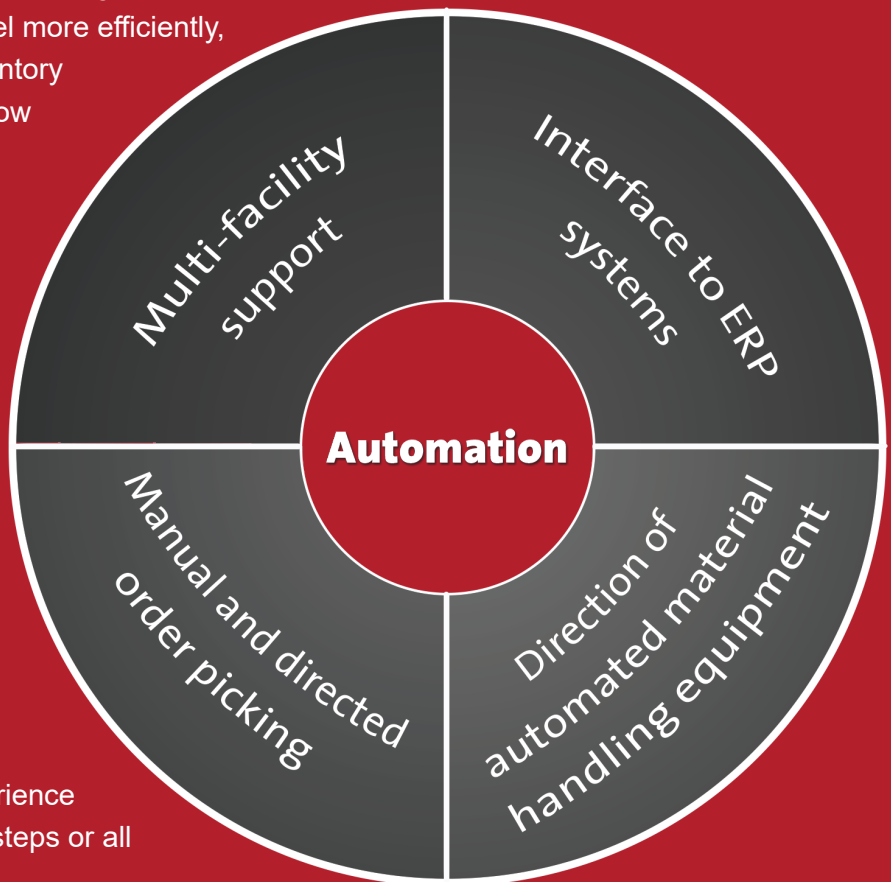
Westfalia is dedicated to providing you with a competitive edge through new technology and warehousing solutions.



Born from automation, Savanna.NET® communicates with various automated material handling equipment more effectively than many other Warehouse Execution Systems (WES) might. The sophistication of the Savanna.NET® WES provides the ability to help an organization utilize its automation and warehouse personnel more efficiently, deliver better storage utilization, increase inventory accuracy, improve product traceability, and allow for customizations to accommodate specific warehousing needs.

As manufacturers and distributors turn to automation, an increased importance is being placed on the software applications to run operations efficiently. Savanna.NET® is the power behind Westfalia's Automated Storage and Retrieval Systems (AS/RS) and many other automated material handling equipment providing unparalleled control of all product flows with maximum system flexibility.

Companies considering automation in their warehouses should consider Westfalia's experience in implementing and servicing automation, in steps or all at once.





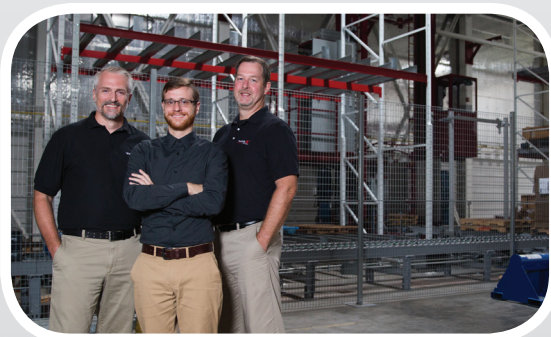
## SERVICE AND SUPPORT

*With you when it counts*

Our dedication to our customers' satisfaction doesn't end with system installation. Westfalia employs full-time Savanna.NET® software developers who perform application installation, training and support work for each customer.

We understand that minimizing or eliminating downtime is critical to the success of your business which is why we ensure each customer has a Support Services Agreement in place with every installation.

As business processes change, your software solution should be able to adapt. Westfalia's Savanna.NET® is designed with this philosophy in mind. The solution's support model provides a straightforward approach to ensure customer satisfaction while ensuring that your system never turns into a legacy system.



**With a Savanna.NET® Support Services Agreement you are provided with the following services:**

- 24/7/365 technical support
- Priority service
- Certified user training
- Software upgrades and modifications
- Version control and management





3655 Sandhurst Drive  
York PA, 17406  
Phone: (717) 764-1115  
Toll Free: (800) 673-2522  
Fax: (717) 764-1118  
Email: [Sales@Savanna.NET](mailto:Sales@Savanna.NET)  
[www.savanna.NET](http://www.savanna.NET)